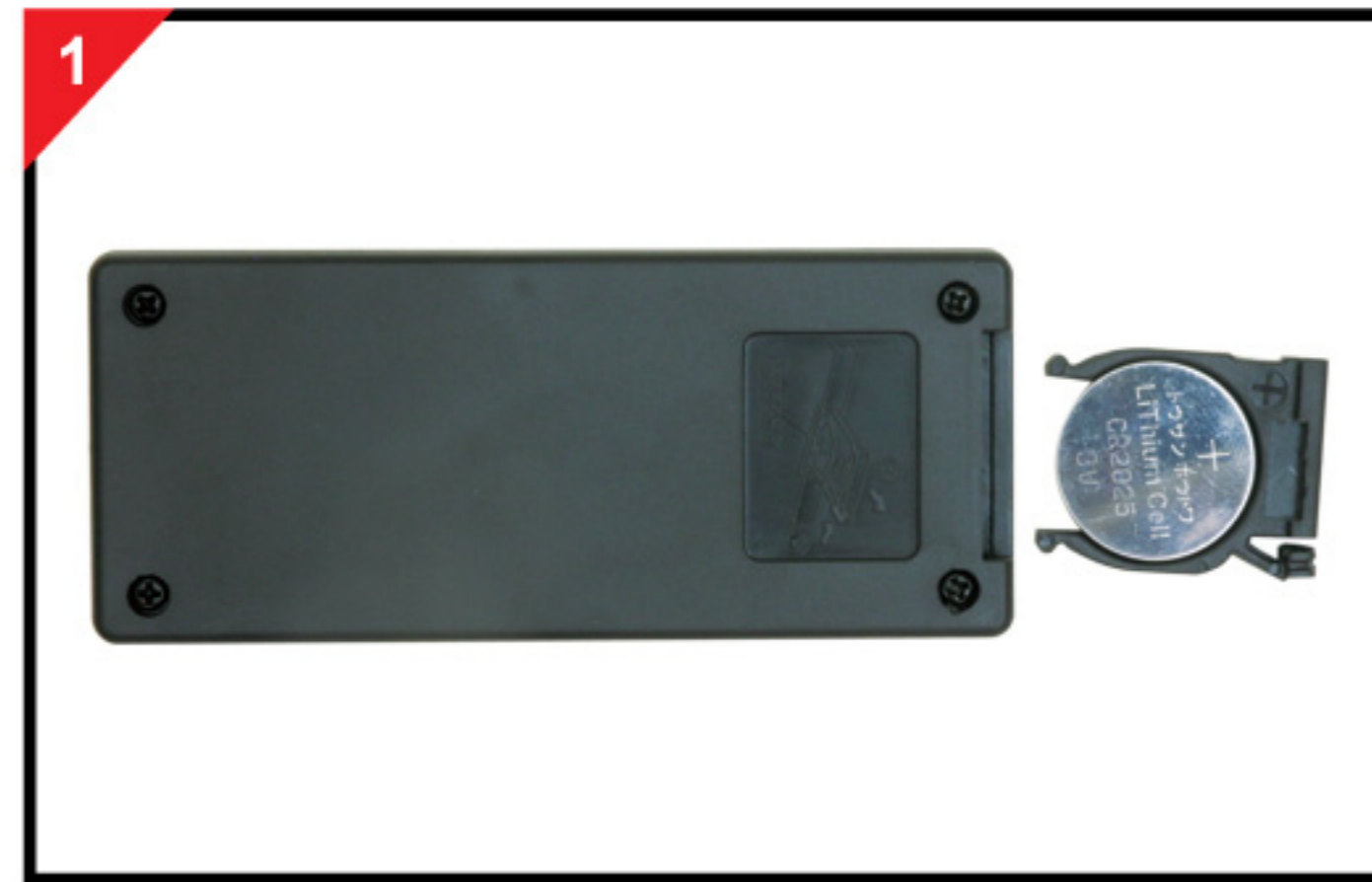


Transmitter battery: Open drawer in base. Insert button battery DL / CR / ECR 2025 into the tray. Ensure the battery polarity matches the + as indicated and push drawer back.



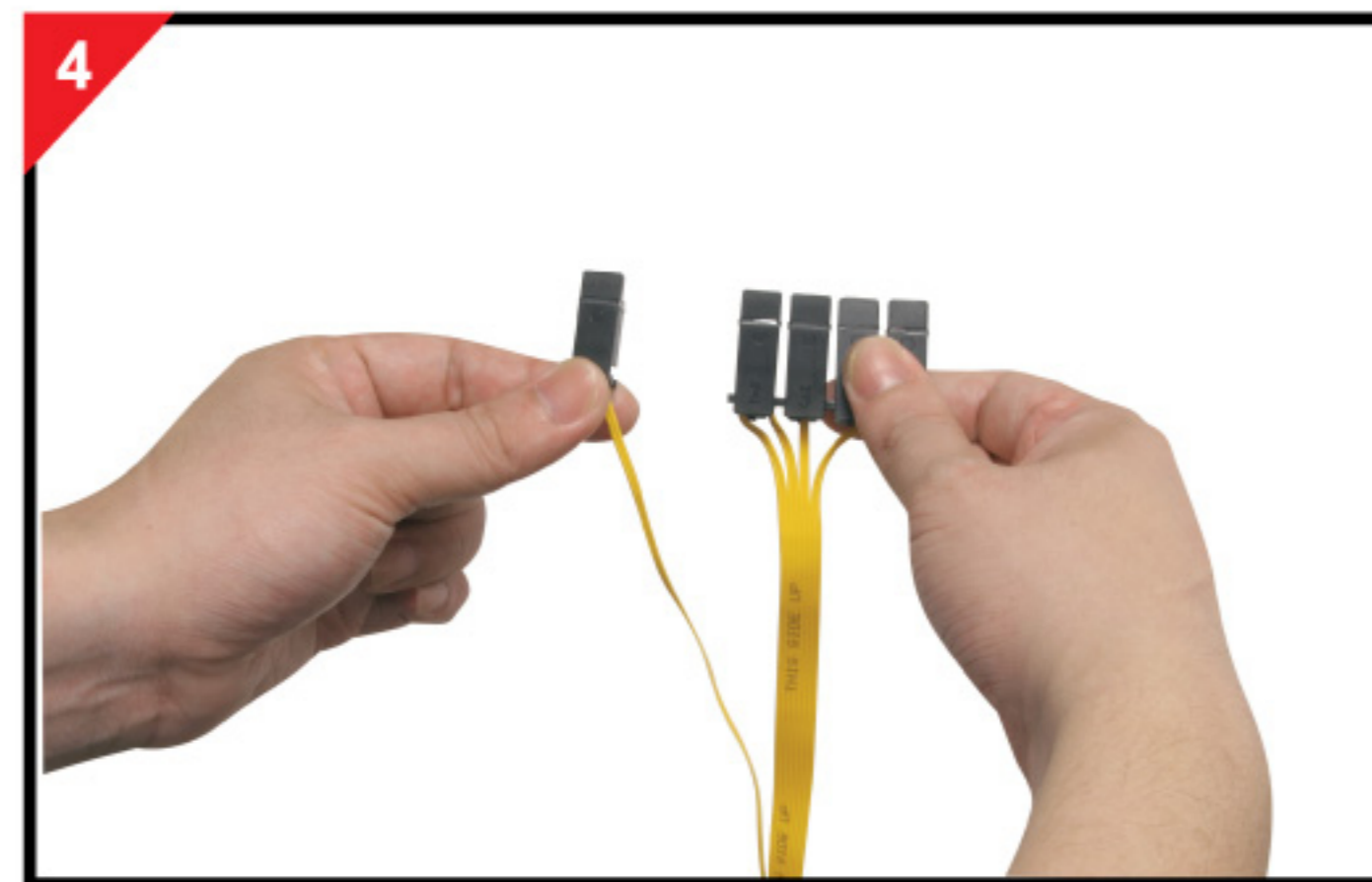
Receiver batteries: Slide open battery cover on base. Insert 3 X 1.5V AA heavy duty batteries. Check polarity is correct and replace battery cover.



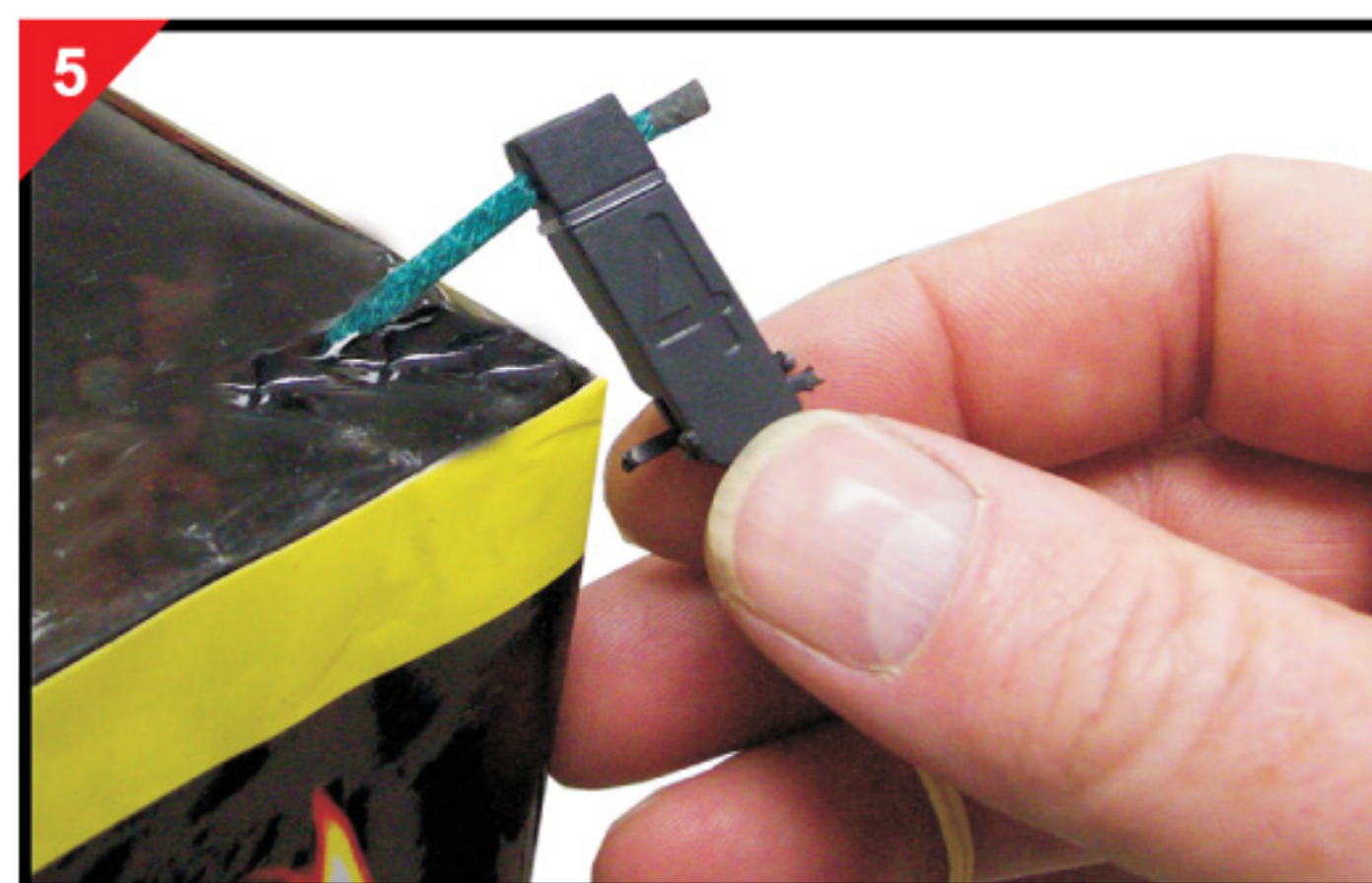
For each receiver set up position fireworks securely on flat ground in a semi circle with a radius of approximately one metre. Secure fireworks as required to avoid toppling over.



Take 1 set of 5 E-CLIPS and divide the flat cable into 5 individual wires.



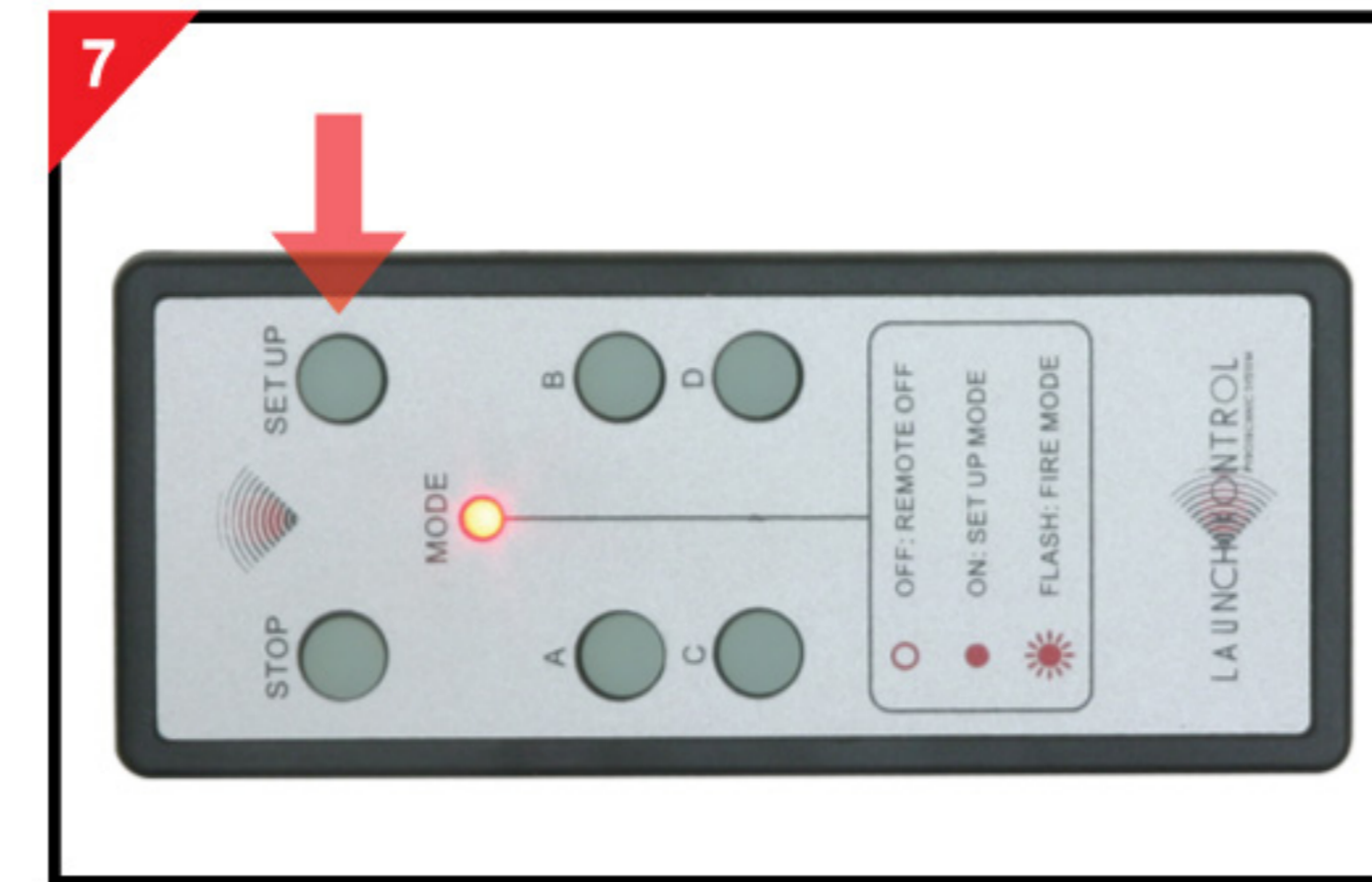
Straighten the firework fuse and carefully connect one E-CLIP by positioning the fuse into the clip notches as indicated. The fuse should protrude from both sides of the clip. Gently press the jaws of the clip together. Repeat for all fireworks. If conditions are wet, cover clip and firework fuse to keep dry.



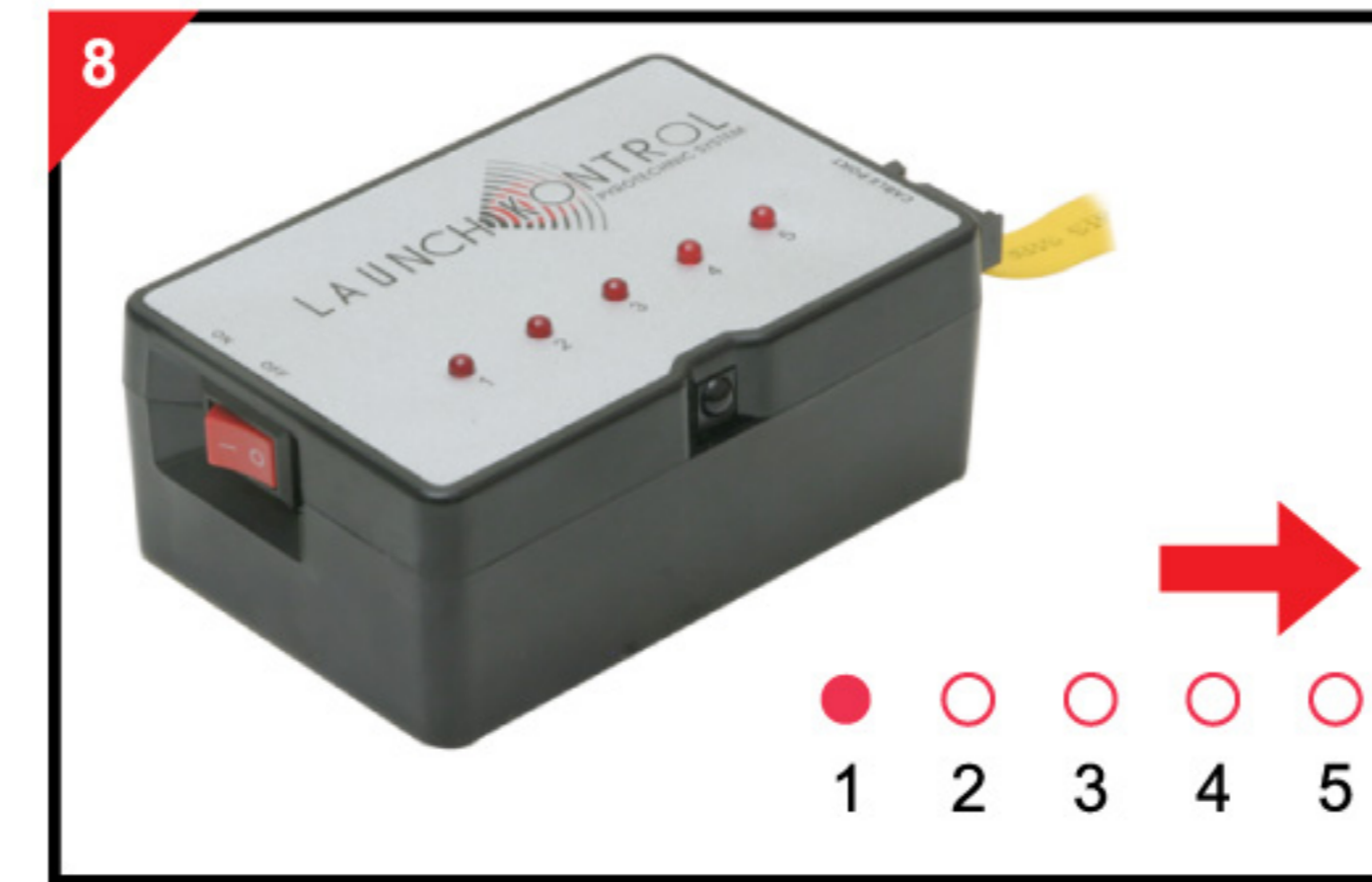
Plug the CABLE CONNECTOR into the CABLE PORT on each receiver.



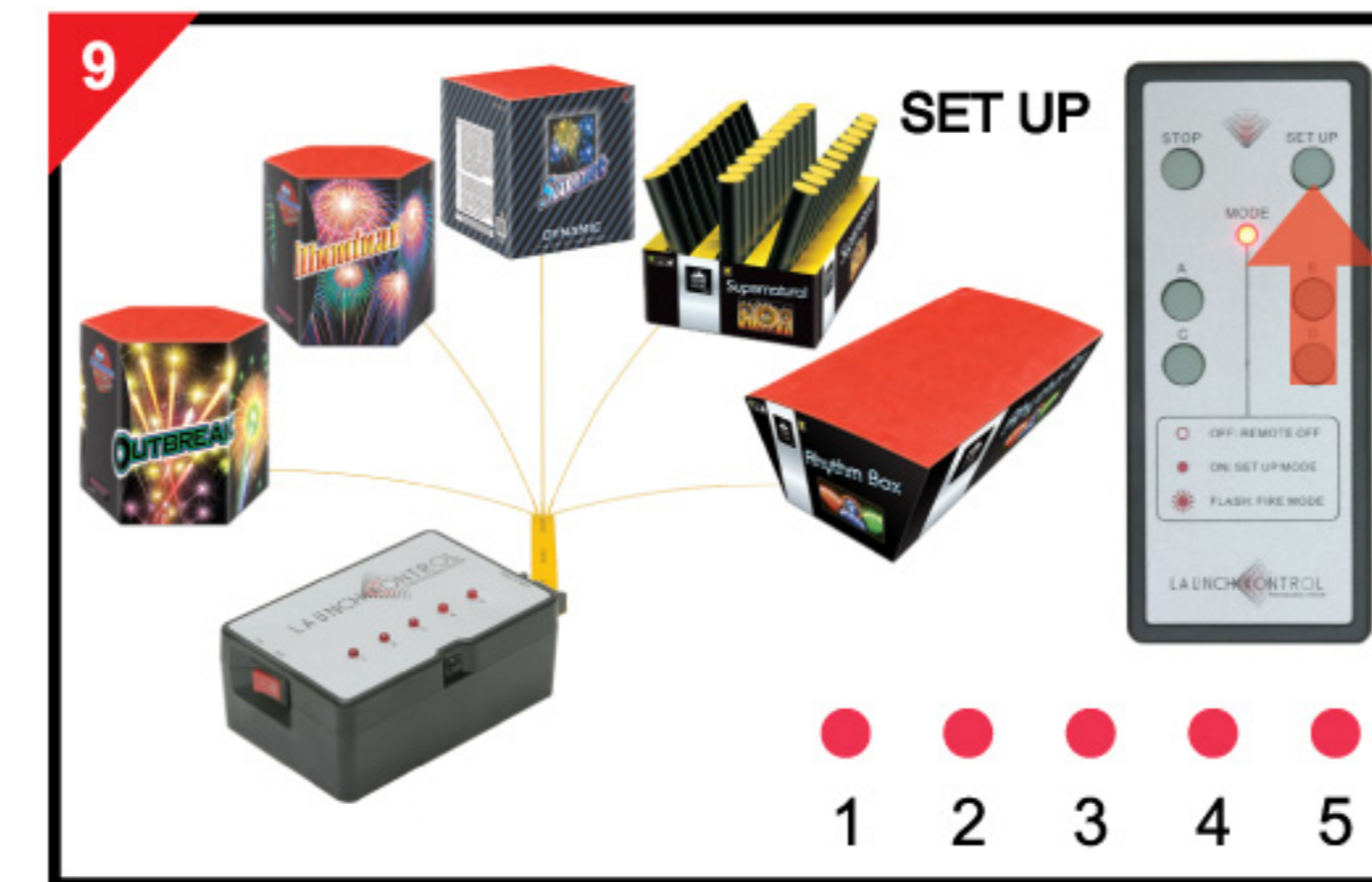
To activate transmitter press and hold the SET UP BUTTON until the red MODE LIGHT illuminates. The transmitter has 4 firing channels A B C and D.



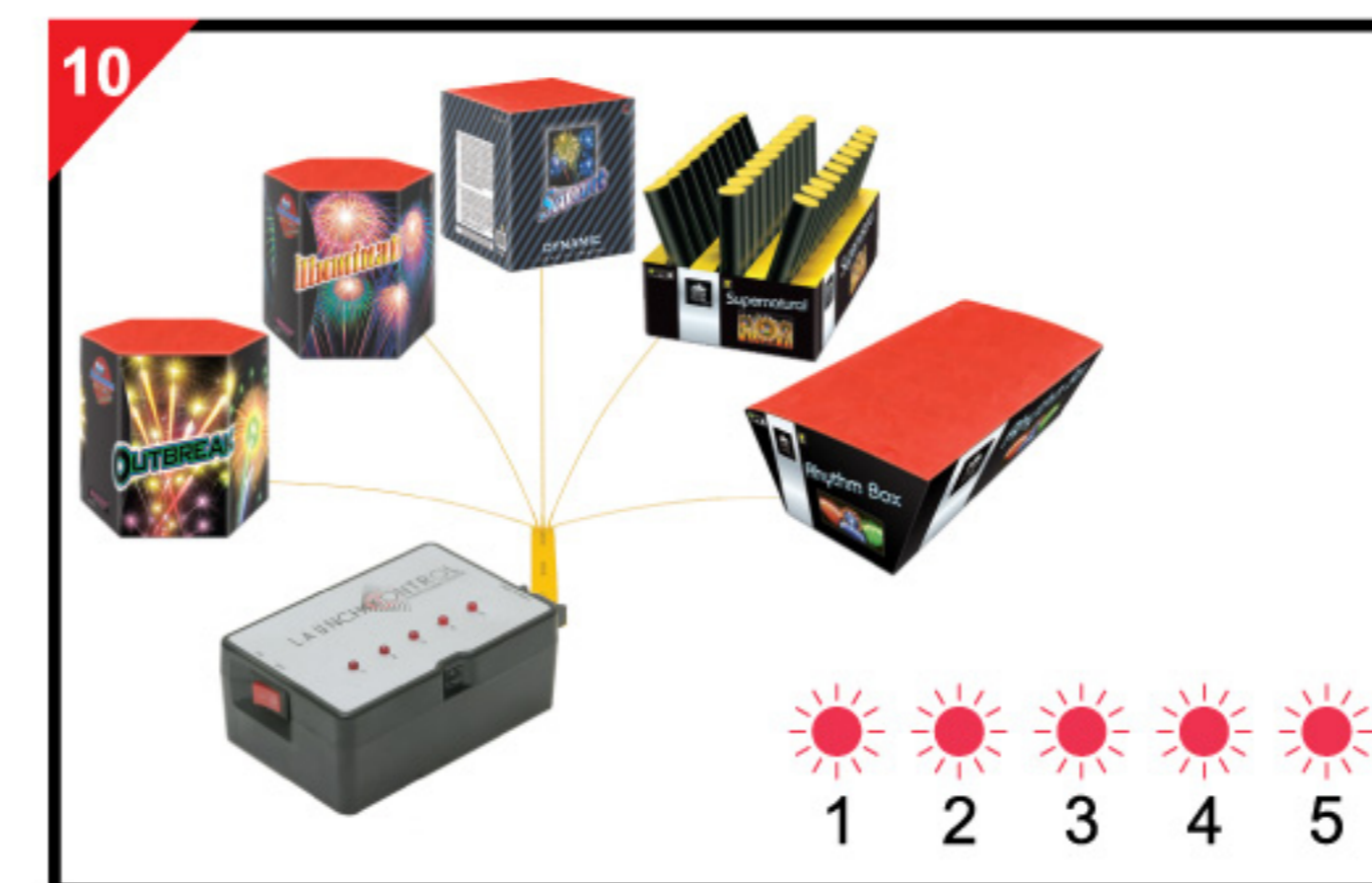
Turn on the receiver. Each INDICATOR LIGHT will illuminate in sequence. Ensure the front of the receiver is visible to the selected firing position. (If you cannot see the receiver, it will not receive commands.)



Point the transmitter at the intended receiver and press one of the 4 firing buttons A,B,C or D. A random Identification code has been sent to synchronize the receiver with the selected firing button. All 5 INDICATOR LIGHTS should illuminate. The receiver will carry out a test of all 5 fuses to ensure they will fire as intended. If a light fails to illuminate switch off the receiver and remove the firework from the defective clip. Repeat for all 4 firing positions as required. It may be advantageous to make a sketch of your display set up as a firing guide.



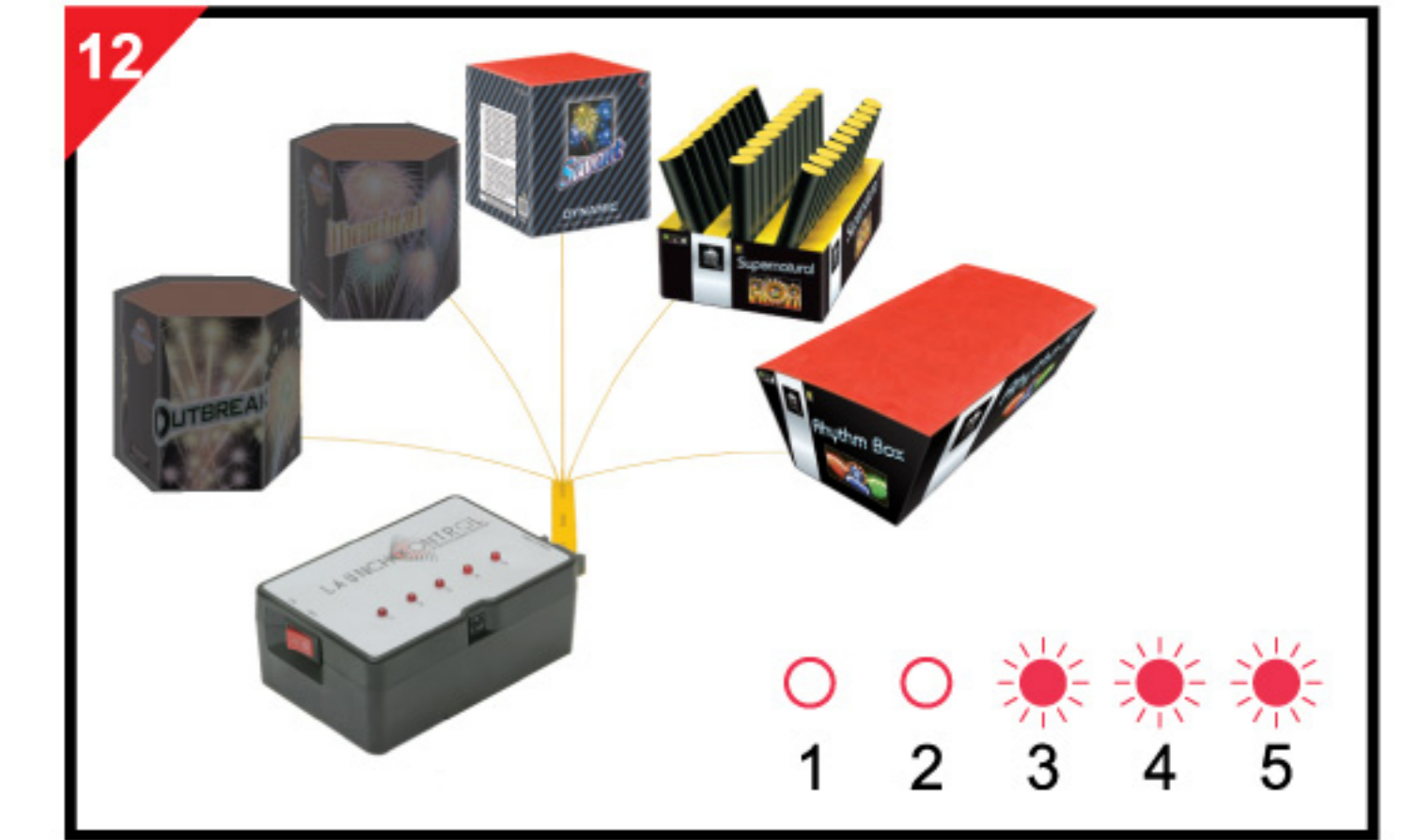
The receiver has a 12 seconds safety delay before you can ignite the fireworks. Check the entire area is clear of spectators and pets, then retreat to your selected safe firing position. After 12 seconds the 5 indicator lights will flash to indicate that the fireworks can be ignited.



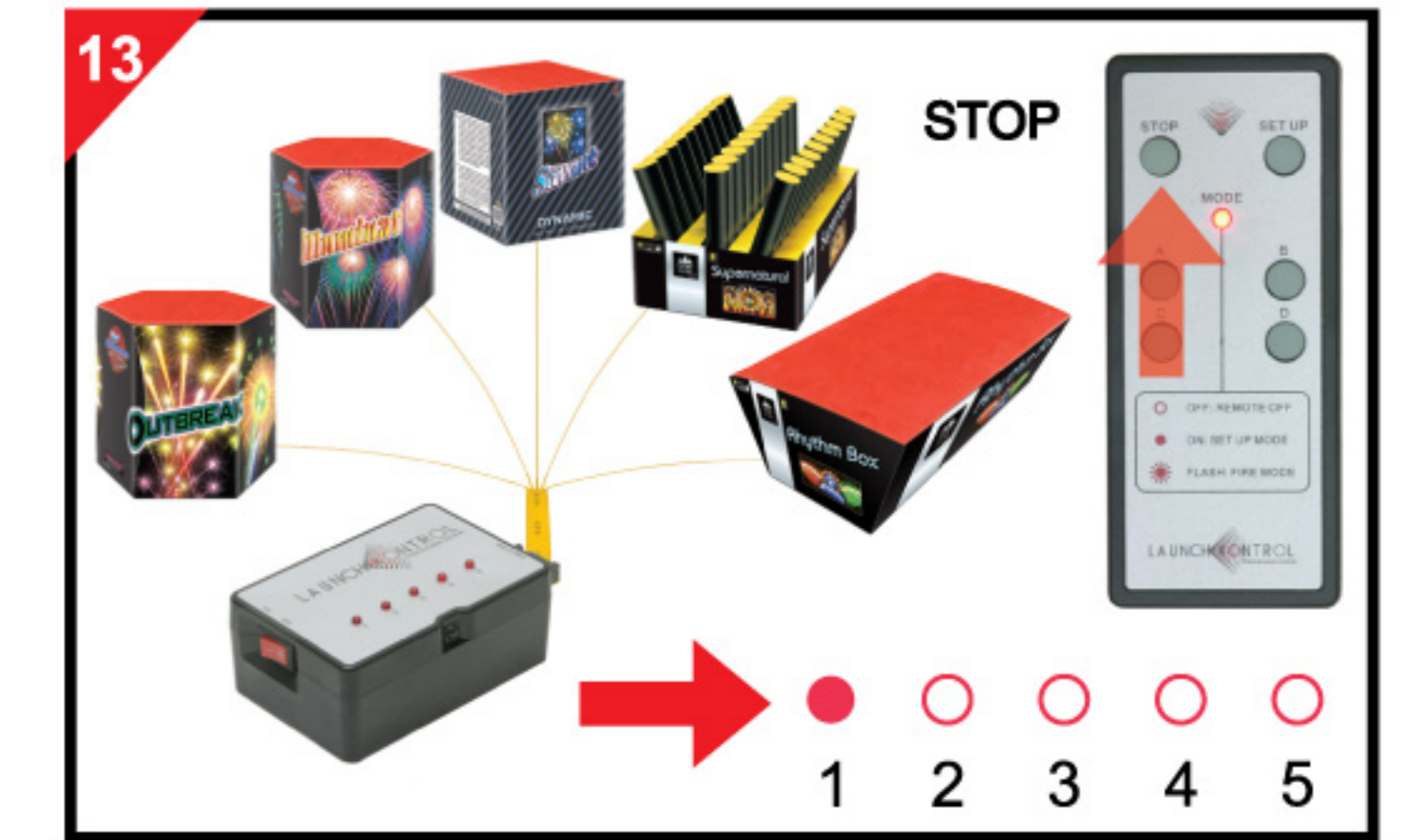
Press and hold the SET UP button to switch the transmitter to firing mode. The MODE LIGHT will flash continuously. Point the transmitter at the intended receiver and press the synchronized firing button. Each receiver will fire 1-5 in sequence when the appropriate firing button is pressed.



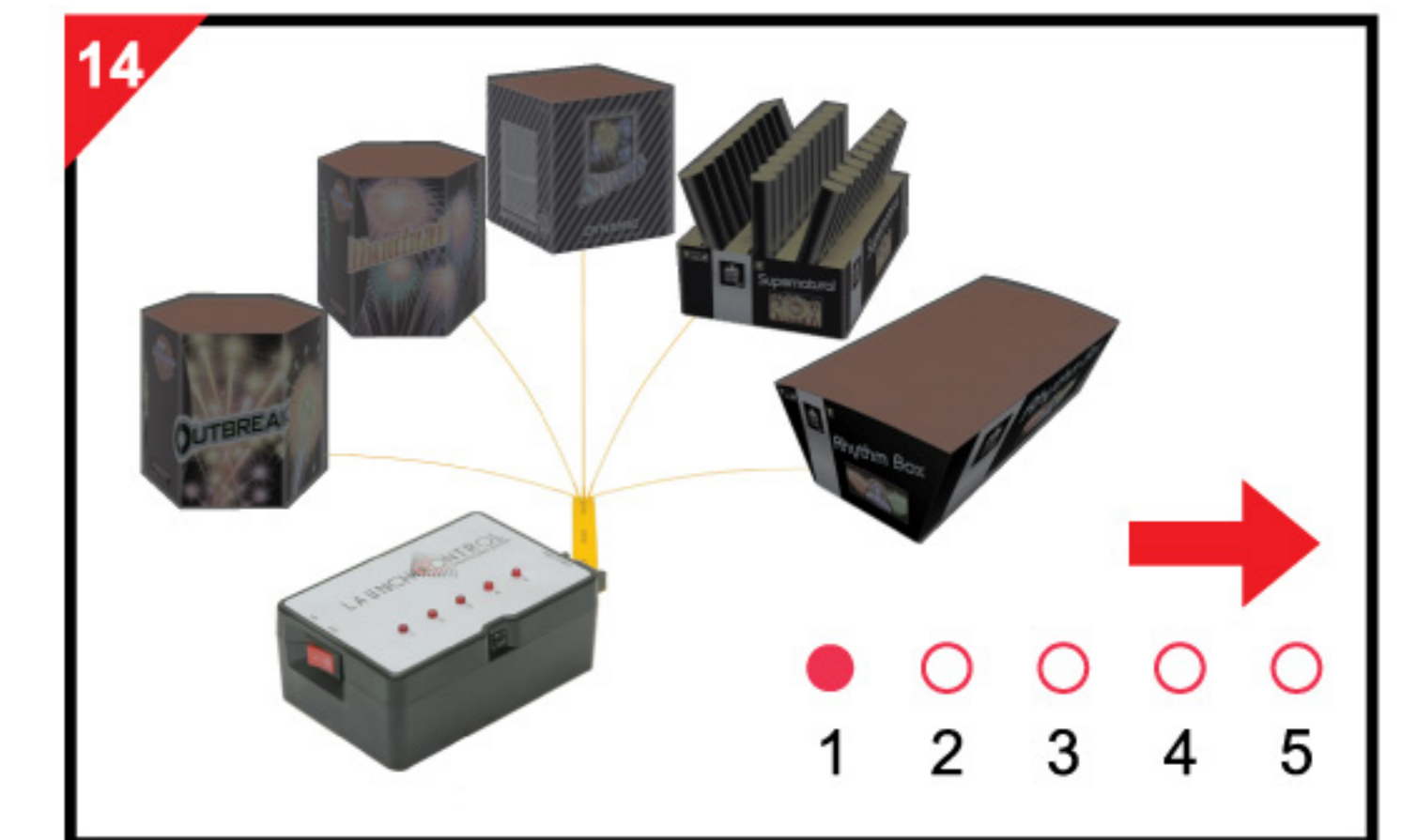
Each time a firing signal is received by the receiver the corresponding INDICATOR LIGHT will switch off. If the light continues to flash ensure you are pointing the transmitter directly at the receiver as no signal is being received.



In an emergency or to stop the display point the transmitter at each receiver and press the STOP button. This will deactivate the firing mode and also hang up the receiver and unable to be fired. Each INDICATOR LIGHT will illuminate in sequence.



Once all the E-CLIPS have been fired the receiver will hang up and each INDICATOR LIGHT will illuminate in sequence.



To switch off transmitter press and hold the SET UP BUTTON until the red MODE LIGHT goes out.

